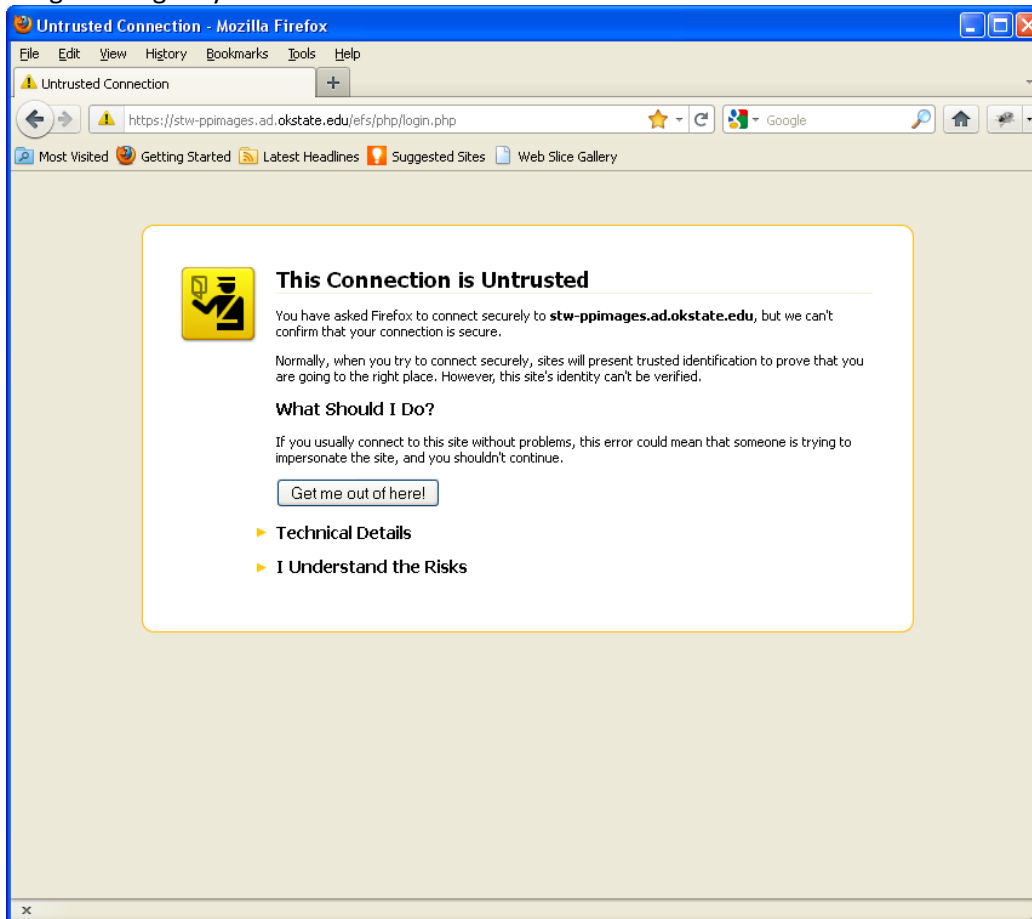


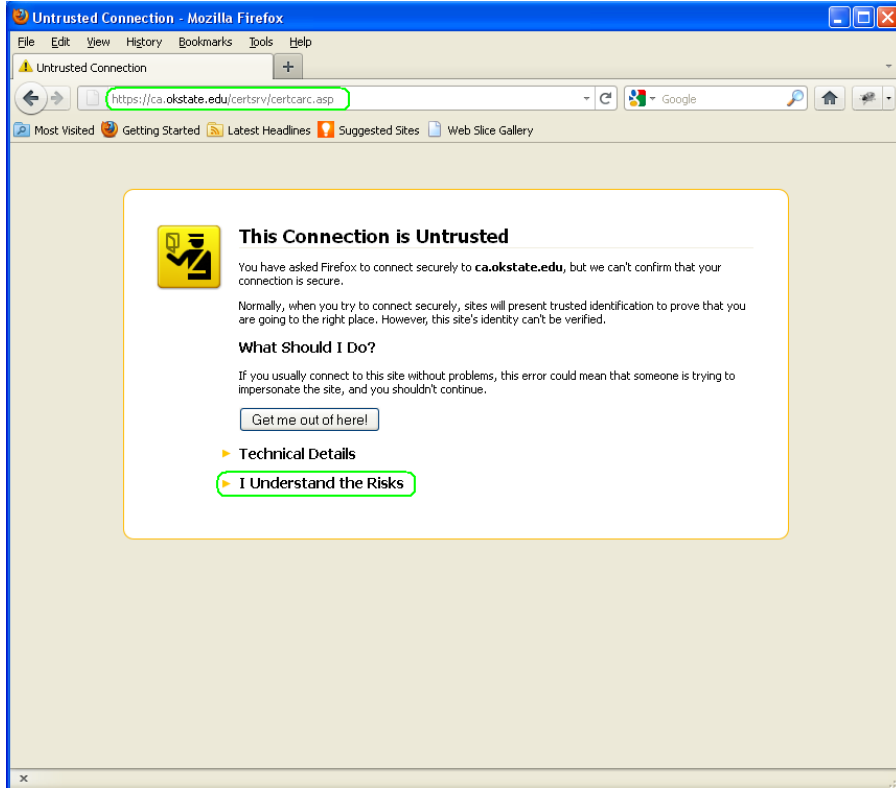
## Instructions to resolve “This Connection is Untrusted” warnings in Mozilla Firefox when using Oklahoma State University Facilities Information Web Applications:

- Pictometry: <https://stw-ppimages.ad.okstate.edu/efs/php/login.php>
- Web Central: <https://stw-facmgmt.ad.okstate.edu/archibus/login.axvw>

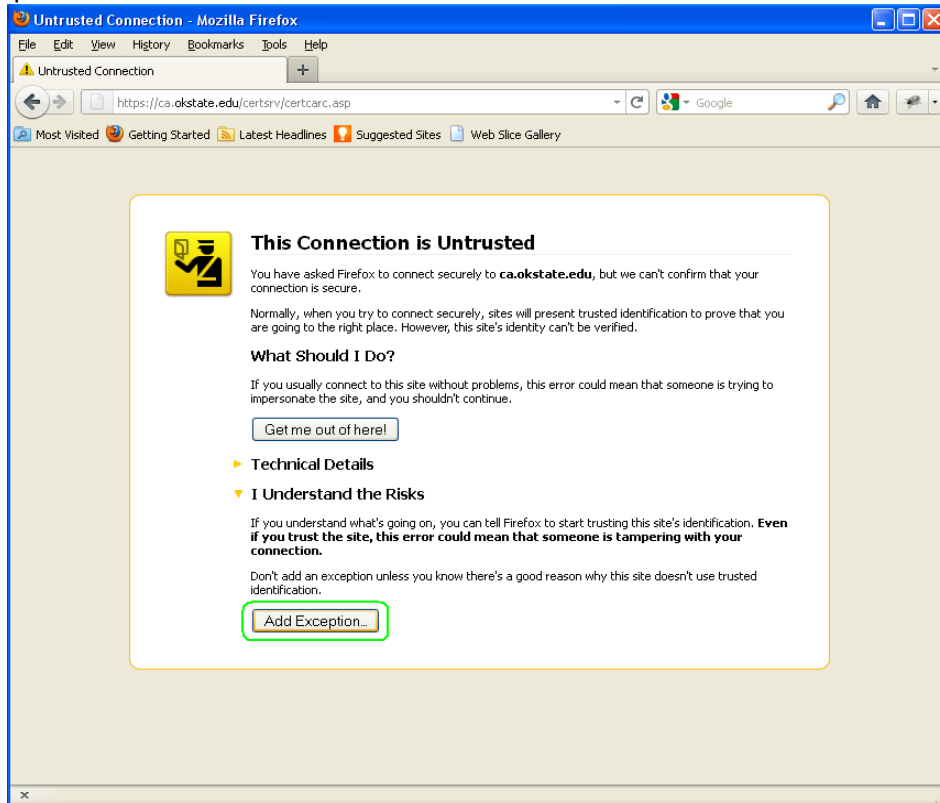
1) The following warning may be seen:



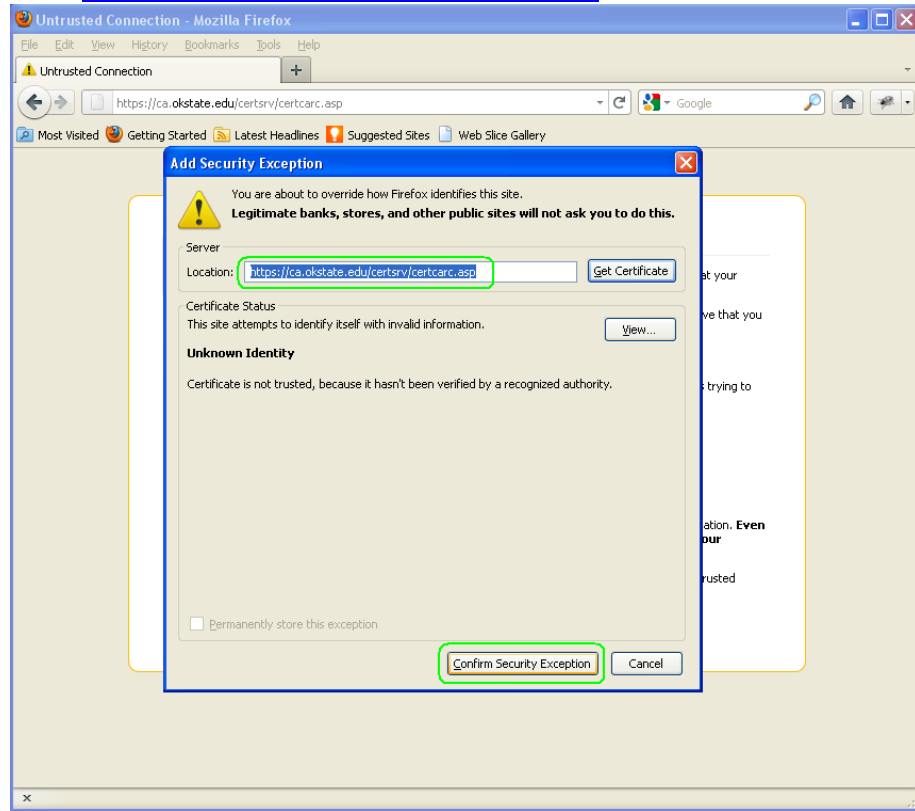
- 2) Install the Oklahoma State University CA certificate. Visit <https://ca.okstate.edu/certsrv/certarc.asp> and click “I understand the Risks”:



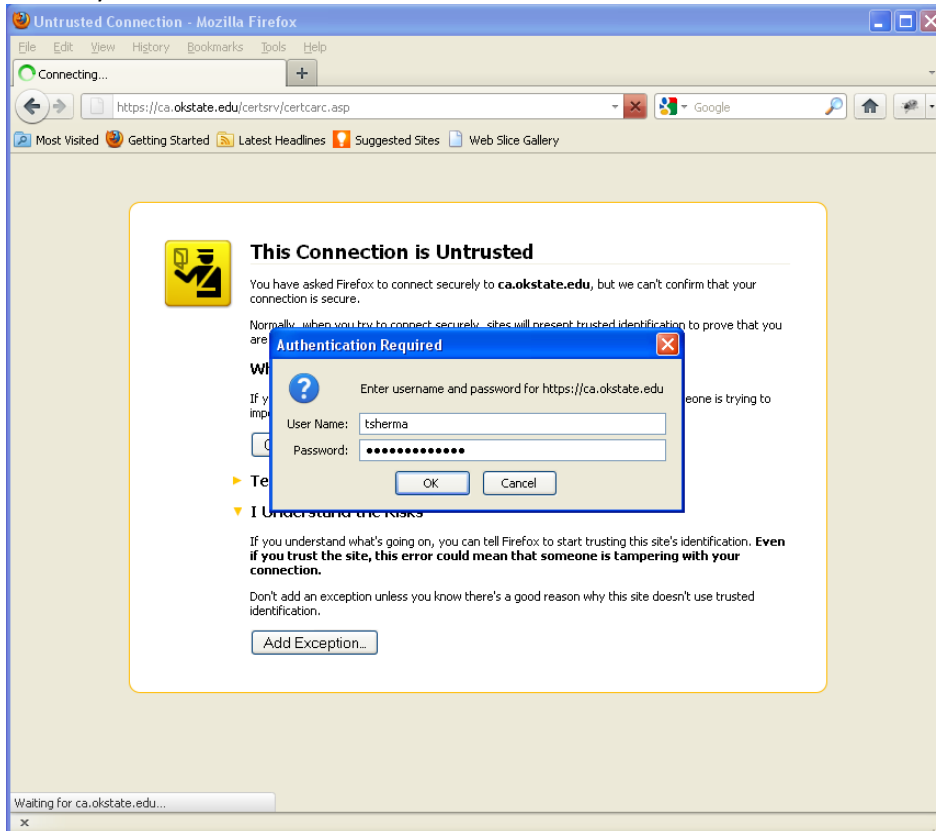
- 3) Click “Add Exception”:



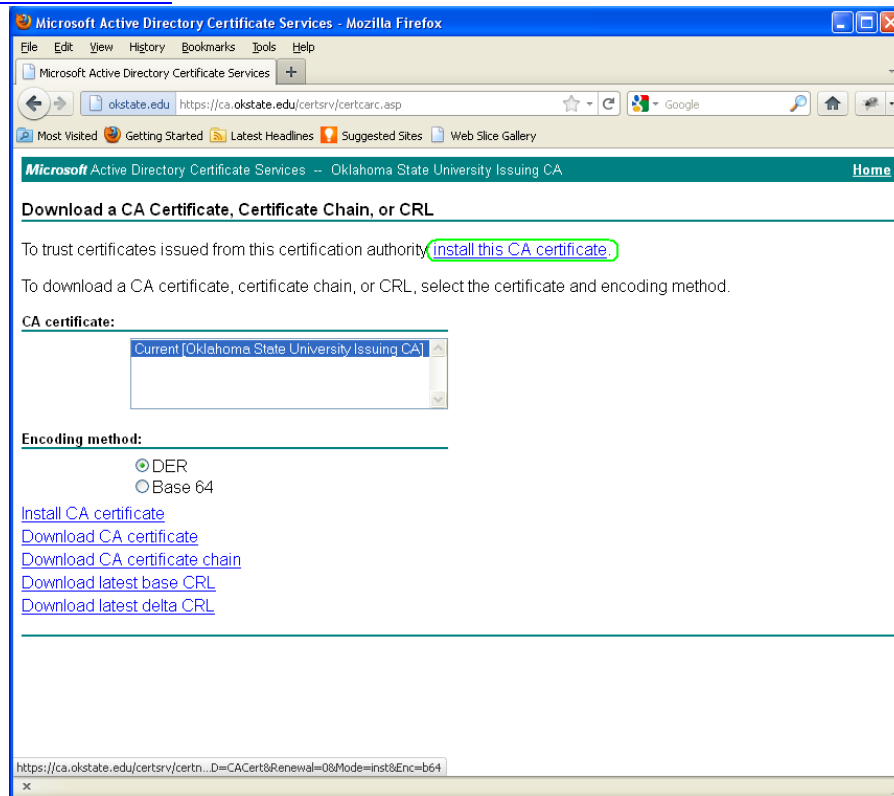
4) Verify the location is “<https://ca.okstate.edu/certsrv/certcarc.asp>” and click “Confirm Security Exception”:



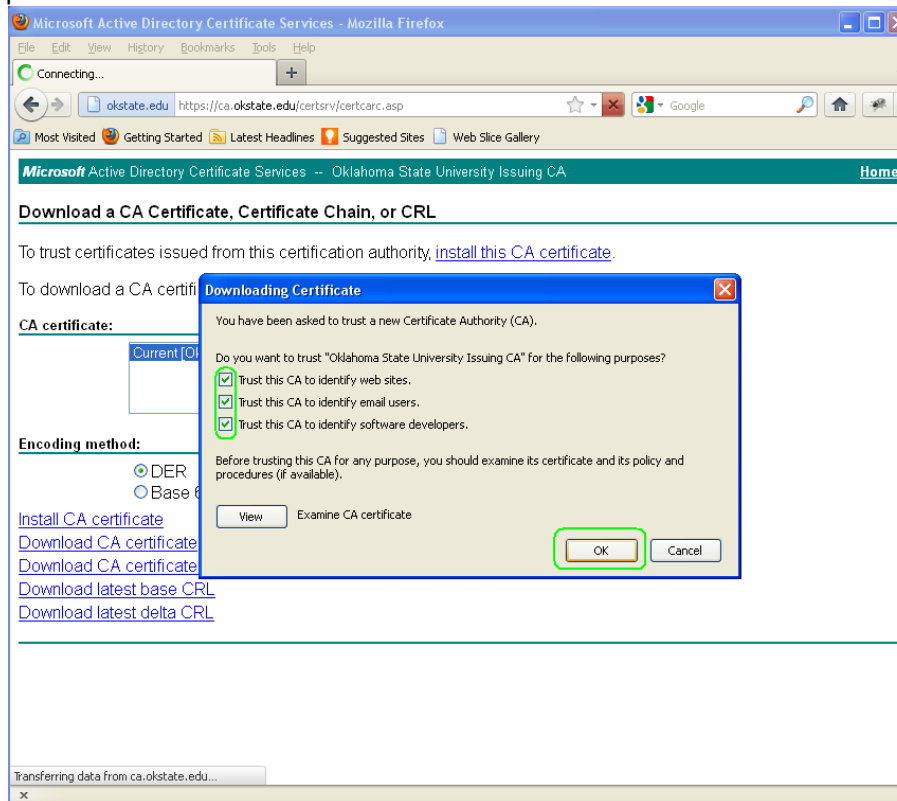
5) Log in using your O-Key short user name and click “OK”:



6) Click [“install this CA certificate”](#):



7) Check all three boxes to trust the Oklahoma State University Issuing CA to identify web sites, email users and software developers. Click [“OK”](#):



8) Now Mozilla Firefox should trust our web applications:

